

FORGE CREATIONS

HOME - INFUSED SPIRITS. CREATED HERE.

WATERMELON & BALSAMIC MOJITO 7.8
WATERMELON HOME-INFUSED RUM
FRESH WATERMELON, BALSAMIC PEARLS, MINT, LIME

PINK PEPPERCORN LEMONADE 6.9
PINK PEPPERCORN HOME-INFUSED VODKA
LEMON, ELDERFLOWER

 **LAPSANG MULE** 7.5
LAPSANG SOUCHONG HOME-INFUSED WHISKEY
LIME, GINGER BEER

 **BARMAN'S CHOICE** 7.5
Ask me for today's



HAMMER & TONG

THE SIGNATURE SIPS

BELLOWS 6.5
GIN, LAVENDER, LEMON

CLINCHER 6.9
PROSECCO, GIN, LIME, GRAPEFRUIT

 **FURNACE** 7.2
TEQUILA, SLOE GIN, LIME

ALL COCKTAILS
MARKED WITH THE ANVIL



4.50

MONDAY - THURSDAY **4PM - 7PM**
FRIDAYS & SUNDAYS **12PM - 10PM**

SMOKING TEAPOTS

*Just for you,
(or between two)*



A CUP OF ROSY G 10
GIN, HOMEMADE LEMONADE,
CUCUMBER, ROSE SMOKE

SMOKIN' SQUIDY 10
THE KRAKEN BLACK SPICED RUM,
PINEAPPLE, PASSION FRUIT, LIME, SQUID INK

CLASSICS

NEGRONI 8.5
GIN, VERMOUTH, CAMPARI

DAQUIRI 6.9
RUM, LIME, SUGAR

OLD FASHIONED 8.9
BOURBON, SUGAR, BITTERS

✂ MOJITO 7.5
RUM, MINT, LIME, SUGAR

✂ SALTED CARAMEL ESPRESSO MARTINI 7.5
VODKA, HOMEMADE 'PADDY & SCOTT'S'
COFFEE MIX, SALTED CARAMEL

✂ PINK PORNSTAR 8.5
PINK PROSECCO, VODKA, HOMEMADE PASSIONFRUIT
LIQUEUR, ROSE, STRAWBERRY, LEMON

*I make a great
Classic too...
Just ask*

SOBER-SMITH

WATERMELON NOJITO 3.8
WATERMELON, APPLE, LIME, MINT

HOMEMADE LEMONADE 3.5
ROSEMARY & RED GRAPE

VIRGIN PORNSTAR 3.8
PASSIONFRUIT, PINEAPPLE, LEMON



VODKA BASED

MIDORI SOUR 7

MIDORI, LEMON,
EGG WHITE,
LIME



DRUMSTICK 6.9

VODKA, CASSIS,
VANILLA, LEMON,
SUGAR, CRANBERRY

GIN BASED

CORPSE REVIVER #28

GIN, COINTREAU,
LILLET BLANC, LEMON,
ABSINTHE SPRITZ

*'Four of these taken
in quick succession
will un-revive
the corpse again'...*
(Harry Craddock)



COLLINS 6.5

GIN, ROSEMARY,
RED GRAPE,
LEMON, SUGAR,
SODA

served dirty.

RUM BASED

CUT SMOKED RUM OLD FASHIONED 8.7

CUT SMOKED SPICED RUM,
BITTERS, SUGAR,
ROSEMARY



PLANTERS PUNCH 6.5

MYERS RUM,
LIME, SUGAR,
SWIZZLE

OTHERS

ROSE & HIBISCUS SPRITZ 6.5

LILLET ROSE, GIN,
HIBISCUS, LEMON,
ORANGE



BLURBON 7.5

BOURBON,
BLUEBERRY,
LEMON, SUGAR,
MINT

PERFECTLY PAIRED
GIN GOBLET

SINGLE / DOUBLE



BEEFEATER 40%

(SMOOTH & CLEAN, WITH ORANGE & CORIANDER)

**PAIRED WITH FEVER TREE MEDITERRANEAN TONIC
FINISHED WITH LEMON & THYME**

6 / 8.5

G'VINE FLORAISON 40%

(PRONOUNCED, FRESH BOTANICALS - CITRIC & GINGER NOTES)

**PAIRED WITH LONDON ESSENCE CLASSIC LONDON TONIC
FINISHED WITH RED GRAPE & CASSIA BARK**

8 / 10.5

OPIHR 40%

(SPICINESS & JUNIPER WITH PLENTY OF CORIANDER)

**PAIRED WITH FRANKLIN & SONS RHUBARB & HIBISCUS TONIC
FINISHED WITH LIME**

6.25 / 8.75

ROKU 43%

(EARTHY, WITH A FRUITY SWEETNESS HIDING UNDERNEATH)

**PAIRED WITH DOUBLE DUTCH CUCUMBER & WATERMELON
FINISHED WITH MINT & RED PEPPERCORNS**

7.5 / 9.5

HENDRICKS 41.4%

(FRESH NOTES OF CUCUMBER WITH JUNIPER, OAK, CITRUS & VANILLA)

**PAIRED WITH DOUBLE DUTCH CUCUMBER & WATERMELON
FINISHED WITH STRAWBERRY HOME-INFUSED WATERMELON**

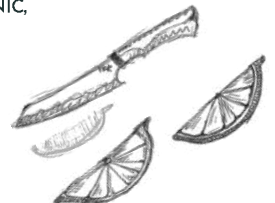
7 / 9.5

BEEFEATER 24 45%

(BOTANICALS STEEPED FOR 24 HOURS. FRAGRANT WITH GOOD SWEETNESS)

**PAIRED WITH FEVER TREE MEDITERRANEAN TONIC,
FINISHED WITH GRAPEFRUIT**

7 / 9.5



RUM

(25ml)

HOME-INFUSED WATERMELON RUM 3.8

Great with a lemonade top

HAVANA 3 YR 40% 4

CLEAN & ROUNDED WITH NOTES OF CITRUS,
VANILLA, OAK, A LITTLE SPICE & LEMON

CUT SMOKED RUM 40% 4.4

NATURAL FLAVOURS OF TOBACCO, ARABICA COFFEE.
PEATY, MEDIUM BODIED.

THE KRAKEN BLACK SPICED RUM 40% 4.3

CHOCOLATE SWEETNESS & VANILLA MINGLE
WITH CINNAMON, CLOVE, GINGER & ORANGE

EL DORADO 12 YR 40% 5

COCOA, CARAMEL, SPICES, VANILLA -
HINTS OF SMOKE ON THE TAIL



VODKA

(25ml)

HOME-INFUSED PINK PEPPERCORN VODKA 3.8

Great with a lemonade top

ABSOLUT 40% 4.2

SMOOTH AS IT HITS THE PALATE, WITH TONS OF
LIQUORICE. THE CLEAR BOTTLE IS STYLED AFTER AN OLD
SWEDISH MEDICINE BOTTLE.

SNOW QUEEN 40% 4.4

MADE FROM ORGANIC WHEAT - CREATED IN
KAZAKHSTAN. GENTLE SPICES, HINTS OF CUSTARD
WITH A TOUCH OF STAR ANISE.

SIPSMITH SIPPING VODKA 40% 4.5

SOFT, SMOOTH, CREAMY MOUTHFEEL,
DELIVERING A ROUNDED, WARMING BRIGHTNESS



GIN

(25ml)

BEEFEATER 40% 4

SMOOTH & CLEAN, WITH ORANGE & CORIANDER

G'VINE FLORAISSON 40% 5.5

PRONOUNCED, FRESH BOTANICALS - CITRIC & GINGER NOTES

OPIHR 40% 4.3

SPICINESS & JUNIPER WITH PLENTY OF CORIANDER

ROKU 43% 4.6

EARTHY, WITH A WHISPER OF FRUITY SWEETNESS
HIDING UNDERNEATH

HENDRICKS 41.4% 4.5

FRESH NOTES OF CUCUMBER WITH JUNIPER, OAK,
CITRUS & VANILLA

BEEFEATER 24 45% 4.4

BOTANICALS STEEPED FOR A FULL 24 HOURS.
FRAGRANT WITH GOOD SWEETNESS

WARNER EDWARDS VICTORIA'S RHUBARB 40% 5

TANGY RHUBARB & A SPICY BLEND OF JUNIPER,
BLACK PEPPER & CARDAMOM



See our full range of favourite tonics & mixers in 'SOFTS'



TEQUILA

(25ml)

1800 SILVER 40% 4

CLEAN, BALANCED TASTE WITH HINTS
OF SWEET FRUIT & PEPPER

1800 REPOSADO 40% 4

UP TO A YEAR IN OAK CASKS - BUTTERY,
CARAMEL & GENTLE SPICE FLAVOURS

PATRON XO CAFÈ 40% 4.2

SLIGHT SWEETNESS IS QUICKLY OVERPOWERED BY STRONG
DRY ESPRESSO, BITTER DARK CHOCOLATE & SPICE

WHISKY/WHISKEY

(25ml)

MONKEY SHOULDER WHISKY 40% 4.2

MELLOW VANILLA WITH SPICY HINTS.

SUNTORY WHISKY TOKI 43% 4.4

MORE GREEN APPLE ON THE PALATE LEADS ALONG BRIGHT CITRUS NOTES, BITTER HERBS, TOASTED ALMONDS & VANILLA OAK WITH WHITE PEPPER & A GINGER SPICE TO THE FINISH

JEFFERSON'S SMALL BATCH WHISKY 41.2% 5

NOTES OF SWEET VANILLA, SPICES, TOFFEE, BERRY FRUITS, A TOUCH OF ORANGE ZEST, SPICES & HONEY

BULLEIT FRONTIER WHISKEY 45% 4.2

ORANGE NOTES, FOLLOWED BY SOME WARMING WINTER SPICES & A HINT OF TOBACCO LEAF

BULLEIT RYE AMERICAN WHISKEY 45% 4.2

RATHER HOT AT FIRST AS THE SPICES COME TO THE FOREFRONT- FOLLOWED BY PEACHES, CHERRIES & A LITTLE BIT OF ORANGE ZEST



BRANDY

(25ml)

JANNEAU VSOP GRAND ARMIGNAC 40% 4.5

AROMAS OF PLUMS WITH STRONG NOTES OF VANILLA

HENNESSY VS COGNAC 40% 4.2

A FULL FLAVOURED COGNAC, WITH HINTS OF HAZELNUTS, RED FRUITS & VANILLA

HINE ANTIQUE XO 40% 10

GREAT NOTES OF SWEET VANILLA, GREEN FRUITS WITH SLIGHT SPICES ON THE TONGUE



DRAUGHT

*Our Guest Ale
changes regularly -
Please ask for today's*

COORS LIGHT 4% 3.9

STAROPRAMEN 5% 4.2

PRAVHA 4% 4

OFFSHORE PILSNER 4.8% 4.4

ASPALL, SUFFOLK CYDER 5.5% 4.1

DOOM BAR, AMBER ALE 4% 3.8

BLUE MOON BELGIAN WHITE WHEAT ALE 5.4% 4.5

All 330ml unless

CANS / BOTTLES

LAGER

BIRRA MORETTI 4.6% 3.8

HOP HOUSE 5% 3.8

ASAHI 5.2% 3.8

BROOKLYN
LAGER 5.2% 3.8
(355ML)

ALE

GOOSE ISLAND IPA 5.9% 4

DRYGATE DISCO FORK LIFT
TRUCK MANGO PALE ALE 5.1% 4.1

DUVEL BELGIAN
GOLDEN ALE 8.5% 5.5

FRANCISCAN WELL
CHIEFTAIN IPA 5.5% 4

CIDER

REKORDERLIG
BOTANICALS 4% 3.9

PEACH - BASIL
RHUBARB - LEMON - MINT

REKORDERLIG
STRAWBERRY
& LIME 4% 3.8

OLD MOUT
PINEAPPLE &
RASPBERRY 4% 3.8

NON ALCOHOLIC

ADNAMS GHOST
SHIP 0.5% 3.8
(500ML)

SAN MIGUEL 0.0% 3.2

SOFTS

'FRANKLIN & SONS' SOFT DRINKS All 2.7

BREWED GINGER BEER

WITH MALTED BARLEY & A SQUEEZE OF LEMON

WILD STRAWBERRY & SCOTTISH RASPBERRY
& CRACKED BLACK PEPPER

CLOUDY APPLE & YORKSHIRE RHUBARB
WITH CINNAMON

SICILIAN LEMONADE & ENGLISH ELDERFLOWER
WITH CRUSHED JUNIPER

TONICS & MIXERS All 2.2

LONDON ESSENCE CLASSIC LONDON TONIC
FEVER TREE MEDITERRANEAN TONIC
DOUBLE DUTCH CUCUMBER & WATERMELON
FRANKLIN & SONS RHUBARB & HIBISCUS TONIC
FRANKLIN & SONS ELDERFLOWER & CUCUMBER TONIC

WATER

STILL OR SPARKLING

HILDON LARGE BOTTLE 4 | HILDON SMALL BOTTLE 2

HOT STUFF

'PADDY & SCOTT'S' COFFEE

AMERICANO 2.2 | ESPRESSO 1.6 / 2
CAPPUCCINO 2.6 | LATTE 2.6

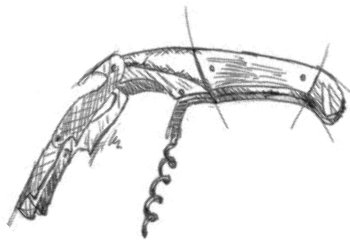
ALL OF THE ABOVE ARE AVAILABLE DECAFFEINATED

HOT CHOCOLATE WITH MARSHMALLOWS 2.5

'TEAPIGS' TEA 2.25

EVERYDAY BREW | DARJEELING EARL GREY | SUPER FRUIT
MAO FENG GREEN TEA | PEPPERMINT | LEMON & GINGER

*Syrups & alternative
milks available.
Please ask*



WHITE



DRY, CRISP & FRESH

PINOT GRIGIO, CA LUCA ITALY
175ML 5.3 250ML 7.5 BOTTLE 22

SAUVIGNON BLANC, DUC DE CHAPELLE FRANCE
175ML 4.7 250ML 6.6 BOTTLE 19.5

BLANCO CHARDONNAY, EL ZAFIRO SPAIN
175ML 4.3 250ML 6 BOTTLE 17.9

SAUVIGNON BLANC, LA PLAYA, COLCHAGUA VALLEY CHILE
175ML 5.4 250ML 7.7 BOTTLE 22.5

AROMATIC & FRUITY

PICPOUL DE PINET, TROIS MATS FRANCE
175ML 5.8 250ML 8.2 BOTTLE 24.5

VIOGNER, LA PLAYER, COLCHAGUA VALLEY CHILE
175ML 5.5 250ML 7.8 BOTTLE 23

SAUVIGNON BLANC, WAIRAU RIVER NEW ZEALAND
175ML 6.8 250ML 9.6 BOTTLE 28.5

FUME BLANC, DE WETSHOF ESTATE SOUTH AFRICA
BOTTLE 27.5

FULL FLAVOURED



GAVI, TENUTE NERIANO ITALY
BOTTLE 27.5

ALBARINO, CONDES DE ALBAREI SPAIN
BOTTLE 28.5

CHABLIS, DOMAINE GUATHERON FRANCE
BOTTLE 34.5

SANCERRE DOMAINE MERLIN CHERRIER FRANCE
BOTTLE 33

RED

LIGHT & BRIGHT

TINTO SHIRAZ TEMPRANILLO, EL ZAFIRO SPAIN
175ML 4.4 250ML 6.2 BOTTLE 17.9

CABERNET MERLOT, DUC DE CHAPELLE FRANCE
175ML 4.7 250ML 6.7 BOTTLE 19.5

PINOT NOIR RESERVE BLOCK 16 CHILE
175ML 6.3 250ML 8.6 BOTTLE 26.5

FLEURIE EMILE CHANDESAIS FRANCE
BOTTLE 29.9



JUICY, FRUITY & WARM

MERLOT, LA PLAYA, COLCHAGUA VALLEY CHILE
175ML 5.3 250ML 7.4 BOTTLE 22

SHIRAZ, COPPERSTONE CREEK AUSTRALIA
175ML 4.9 250ML 6.9 BOTTLE 20.5

RIOJA CRIANZA, AZABACHE SPAIN
175ML 6.5 250ML 9.1 BOTTLE 26.9

MALBEC, POTAGER DU SUD FRANCE
175ML 5.4 250ML 7.7 BOTTLE 22.5

SPICY & INTENSE

CABERNET SAUVIGNON, LA PLAYA CHILE
175ML 5.7 250ML 8 BOTTLE 23.5

MALBEC RESERVA, FINCA SOPHENIA ARGENTINA
175ML 7.8 250ML 10.9 BOTTLE 32.5

COTES DE RONE, AMANDINE FRANCE
BOTTLE 26.5

ZINFANDEL, CA MONI USA
BOTTLE 33



ROSE

PINOT GRIGIO BLUSH, SAN ANTINI ITALY
175ML 4.7 250ML 6.7 BOTTLE 19.5

BLUSH ZINFANDEL, SUN GATE USA
175ML 5.1 250ML 7.1 BOTTLE 21

PINOT NOIR ROSE, LOIRE VALLEY FRANCE
175ML 5.5 250ML 7.9 BOTTLE 23



CHAMPAGNE & SPARKLING

CUVÉE ROSE HERITAGE
FLUTE 5.5 BOTTLE 28

PROSECCO, BORGIO DEL COL ALTO
FLUTE 5.7 BOTTLE 30.5


VAUBAN FRÈRES
BOTTLE 42.5

LAURENT PERRIER BRUT NV
BOTTLE 59

FRIDAY FIZZ

12 NOON - 7PM, EVERY FRIDAY

Celebrate the end of a long working week with all bottles of Prosecco 15.00, all the way through from midday to 7pm.



*All artwork scribbled by our very own Max -
Blacksmith by day (really), our Head Barman by night*